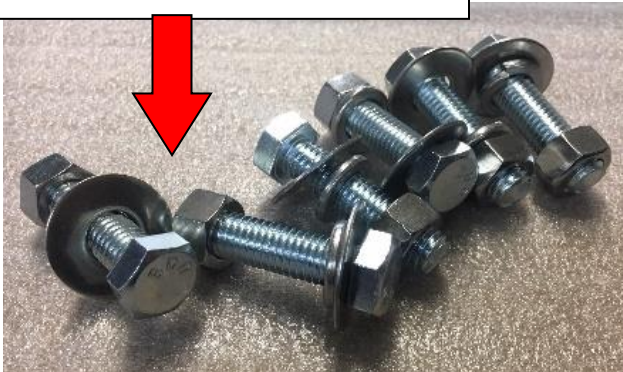


Mirrorlite® Custom Overhead Demo Mirror Setup Instructions

This document contains step-by-step instructions for setting up one of our Mirrorlite® support systems. Your kit should include:

- Two (2) support stands with mounting brackets
- Two (2) crossbar sections
- Six (6) 2" Super black clamps

12-pcs Hex Bolts, Hex nut washers and lock Washers



1- Allen Key



6-pcs-10-24x1
½" head screws



6pcs-1/4-20x3/4"
round head screws



6-pcs-2" Super Clamps

Step 1: Attach support stands with mounting brackets to the side of cabinet using Hex Bolts, Hex nut washers and lock washers. Each support stand is labeled long side D and short side C for cabinet positioning.



Step 2: Attach cross bars together. Unite cross bar A&B with cross bar A and then tighten fitting B with allen key provided. Remove blue labels after assembled.



Step 3: Attach cross bars to support stands C & D aluminum corner fitting.



Step 4: Adjust to desired height and tighten aluminum corner fittings with allen key .

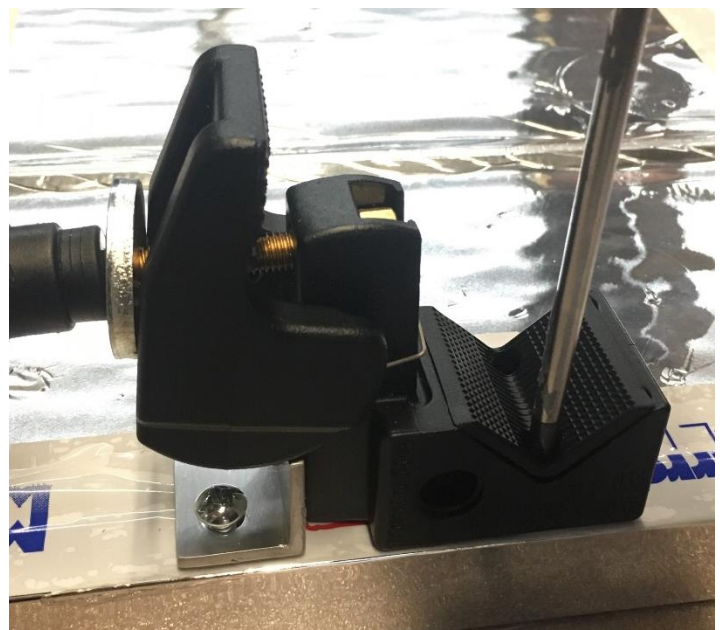
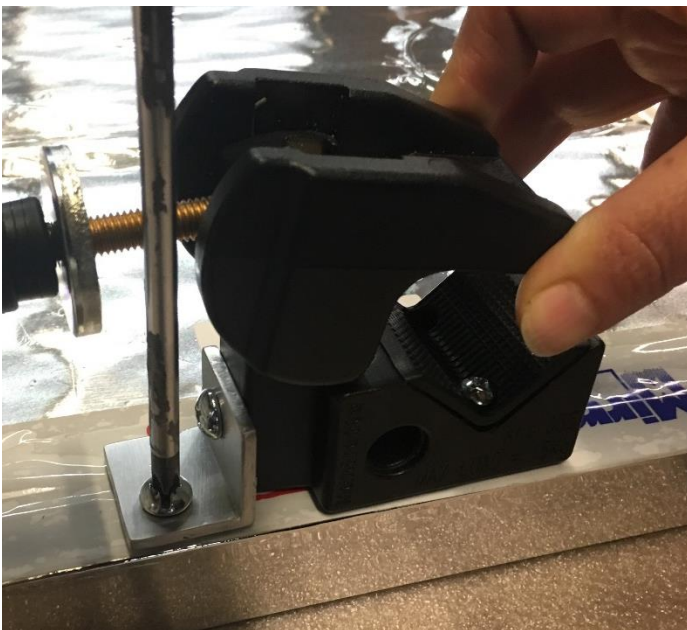


Your Mirrorlite® support overhead system is now setup and ready for use.

Step 5 : Carefully unpack mirror, leaving on protective plastic wrap on face of mirror. We suggest using flat shipping box as work surface in order to prevent pressing against mylar mirror face. Match clamps with Left or Right labels.



Step 6: Line up clamps Left or Right per label with one ¼-20 machine screws and one #10-24 screws into holes by red tape. Evenly screw down base of bracket.



Step 7: Repeat for other side of mirror.

Step 8: Lay cross bar into clamp jaws and gently tighten clamp.

